



**EAGLE MOUNTAIN
SAGINAW ISD**

Long Range Facility Planning Committee

May 30, 2024

District Mission



The mission of Eagle Mountain-Saginaw Independent School District is to foster a culture of excellence that instills a passion for a lifetime of continuous achievement in every student.



Fostering a Culture of Excellence

Agenda



- **Dinner and Welcome**
- **Committee Purpose and Charge**
- **Introductions of New Members**
- **Demographic Update and Enrollment Projections**
- **Bond Progress to Date**
 - **Eagle Mountain High School**
 - **Wayside Middle School**
- **Summer 2024 Projects**
- **Closing Remarks**

Facility Planning Committee's Charge



- Consider the educational needs of all students and align with the district's mission and Aspire Pillars of Excellence (strategic plan)
- Represent the entire community, its values, and perceptions in the facility planning process
- Assess and prioritize the district's current and long-term facility needs, including new construction, renovations, equipment/system life cycles, and capital improvements
- Bring forward recommendations to the Board of Trustees as to how to address the district's facility needs to support enrollment growth and program progress, both short and long-term.



HELLO!

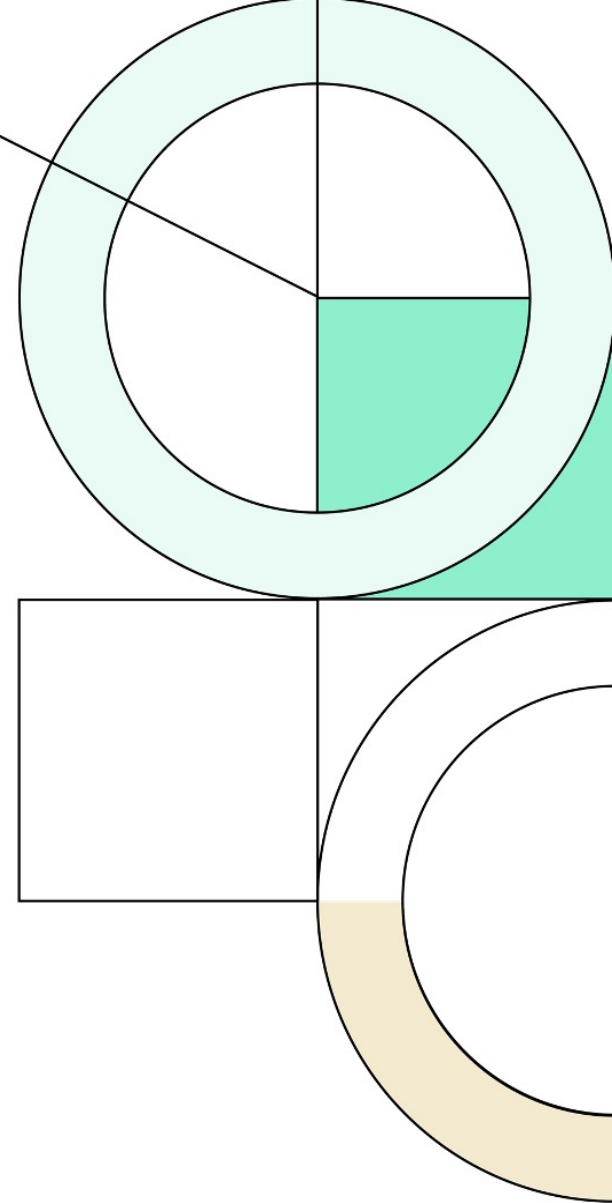
New Members!



Eagle Mountain- Saginaw Independent School District

1Q24

Demographic Report





DFW New Home Ranking Report

ISD Ranked by Annual Closings – 1Q24

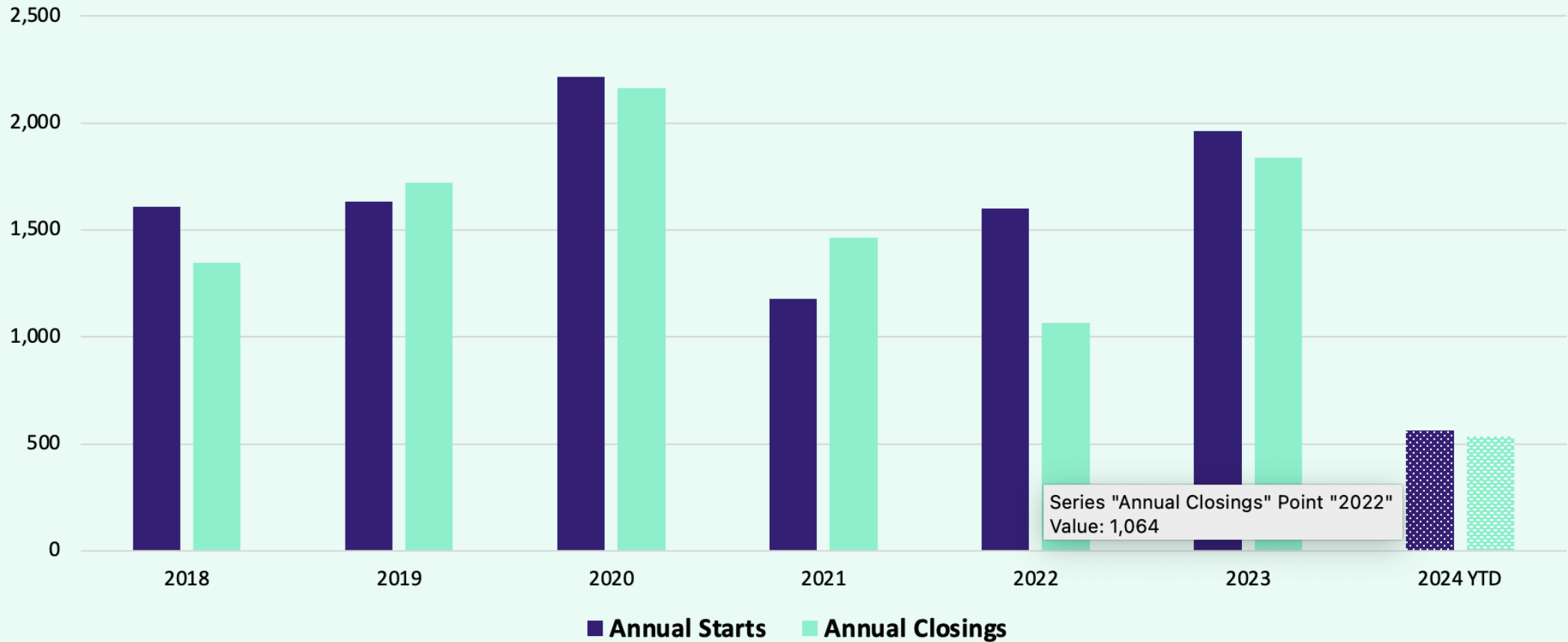
Rank	District Name	Annual Starts	Annual Closings	Inventory	VDL	Future
1	NORTHWEST ISD	3,419	3,113	1,941	3,783	39,513
2	DENTON ISD	2,862	2,913	1,643	3,444	27,921
3	PROSPER ISD	2,820	2,960	1,705	2,857	17,661
4	PRINCETON ISD	2,696	2,196	1,513	3,923	11,204
5	EAGLE MOUNTAIN-SAGINAW ISD	2,162	2,006	1,247	1,752	11,840
6	MCKINNEY ISD	2,070	1,660	1,455	2,899	9,172
7	FORNEY ISD	1,818	1,543	1,181	4,364	22,815
8	COMMUNITY ISD	1,340	906	823	2,565	10,264
9	AUBREY ISD	1,314	1,207	564	1,213	8,072
10	CROWLEY ISD	1,292	1,353	711	2,596	14,171
11	MELISSA ISD	1,284	1,408	605	1,185	2,048
12	ROYSE CITY ISD	1,229	1,291	635	2,113	12,704
13	ANNA ISD	1,194	997	679	1,584	9,836
14	CRANDALL ISD	1,021	731	691	3,220	14,962
15	FRISCO ISD	997	1,016	665	2,292	8,353
16	MANSFIELD ISD	975	1,040	690	2,595	6,611
17	MIDLOTHIAN ISD	968	839	616	2,556	11,107
18	CELINA ISD	959	924	648	2,122	39,245
19	ROCKWALL ISD	873	1,124	708	3,562	12,129
20	DALLAS ISD	825	1,349	1,229	1,886	5,261

* Based on additional Zonda Education housing research

** Totals **DO NOT** include Age-restricted communities



District New Home Starts and Closings

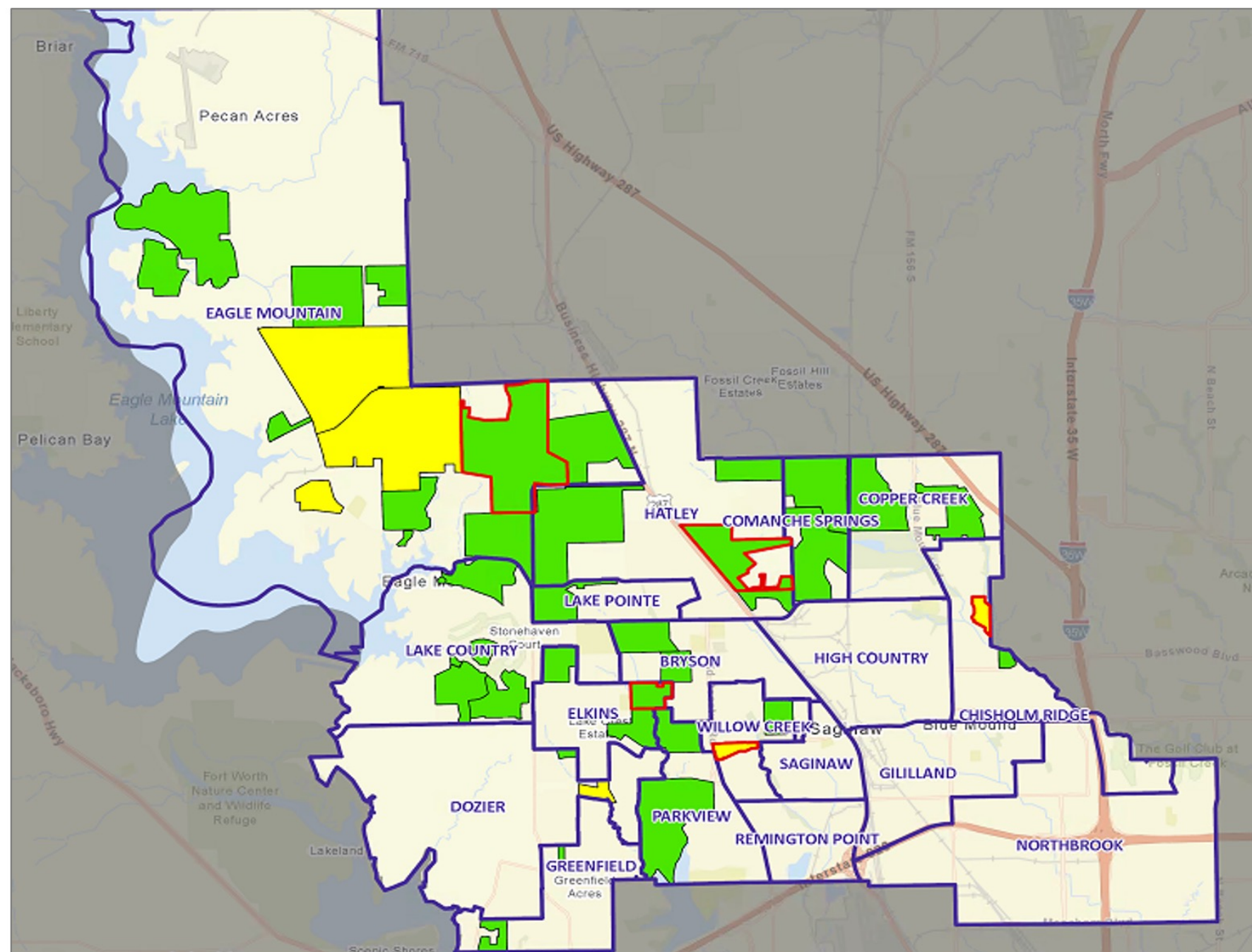
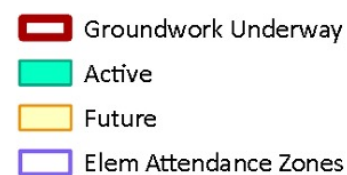


Starts	2018	2019	2020	2021	2022	2023	2024
1Q	389	351	530	321	292	397	563
2Q	411	439	593	356	413	599	0
3Q	293	442	514	312	376	601	0
4Q	517	401	580	191	521	364	0
Total	1,610	1,633	2,217	1,180	1,602	1,961	563

Closings	2018	2019	2020	2021	2022	2023	2024
1Q	295	285	340	473	161	368	537
2Q	310	483	567	425	256	510	0
3Q	374	512	664	300	383	681	0
4Q	367	441	591	264	264	279	0
Total	1,346	1,721	2,162	1,462	1,064	1,838	537

Housing Overview

- 33 Active Subdivisions
- 10 Future Subdivisions
- Groundwork Underway: 2,564 Lots within 6 Subdivisions
- 109 Lot Deliveries in Q1 2024






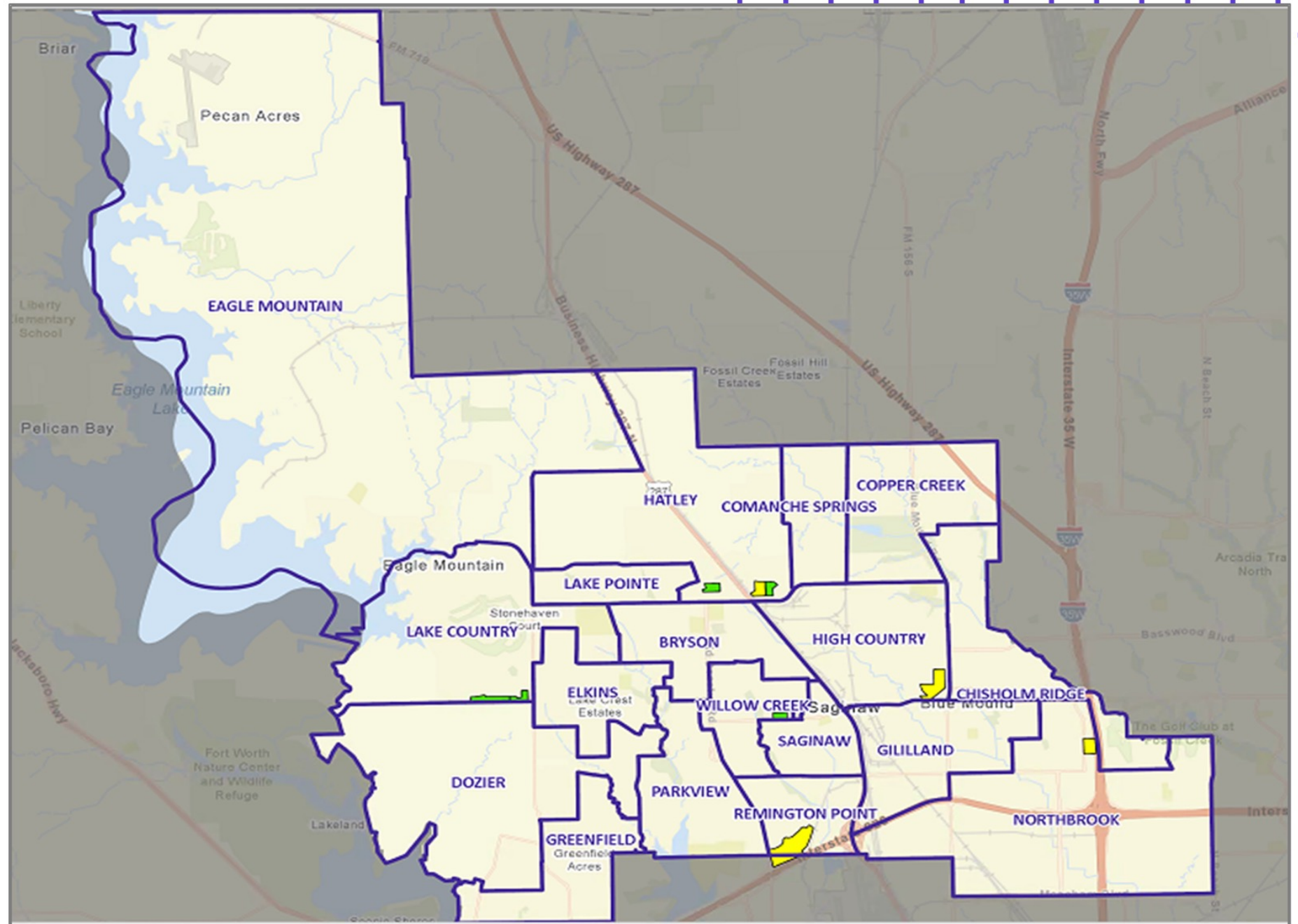
Multifamily Overview

4 multifamily projects in planning (2,036 future units)

924 multifamily units currently under construction (5 separate projects)

Multifamily Development

-  Future
-  Under Construction
-  Elementary Attendance Zones



Ten Year Forecast by Elementary Campus

			Fall	ENROLLMENT PROJECTIONS									
Campus	Capacity	2022/23	2023/24	2024/25	2025/26	2026/27	2027/28	2028/29	2029/30	2030/31	2031/32	2032/33	2033/34
HAFLEY DEVELOPMENT CENTER	374	365	248	328	347	363	372	364	381	402	417	439	457
BRYSON ELEMENTARY	736	548	486	499	530	542	565	586	610	626	633	637	635
CHISHOLM RIDGE ELEMENTARY	803	720	692	665	673	666	669	680	697	709	715	727	740
COMANCHE SPRINGS ELEMENTARY	781	553	583	624	663	672	680	703	712	732	736	723	724
COPPER CREEK ELEMENTARY	803	648	691	707	726	763	785	787	804	806	810	818	836
DOZIER ELEMENTARY	803	725	725	678	672	635	620	624	653	682	727	803	919
EAGLE MOUNTAIN ELEMENTARY	758	501	520	581	640	718	882	1,039	1,175	1,332	1,494	1,678	1,864
ELKINS ELEMENTARY	736	646	650	641	639	632	631	621	622	634	643	646	655
GILILLAND ELMENTARY	691	481	495	483	477	483	474	459	456	452	448	444	440
GREENFIELD ELEMENTARY	803	689	639	639	621	619	586	596	616	634	650	667	675
HATLEY ELEMENTARY	803	0	216	315	439	568	739	918	1,007	1,036	1,079	1,125	1,164
HIGH COUNTRY ELEMENTARY	758	567	535	538	530	512	491	469	479	490	499	507	517
LAKE COUNTRY ELEMENTARY	803	671	692	703	708	743	771	830	884	899	916	924	927
LAKE POINTE ELEMENTARY	781	660	764	754	767	784	785	796	807	817	823	818	822
NORTHBROOK ELEMENTARY	781	571	566	552	538	547	525	513	509	515	517	522	526
PARKVIEW ELEMENTARY	781	554	563	561	569	596	617	642	658	672	673	672	671
REMINGTON POINT ELEMENTARY	758	551	547	566	587	605	642	644	649	654	652	650	640
SAGINAW ELEMENTARY	558	327	359	332	323	331	309	322	330	334	337	341	347
WILLOW CREEK ELEMENTARY	870	634	627	644	664	659	649	658	658	656	668	676	690
ELEMENTARY TOTALS	14,181	10,411	10,598	10,809	11,112	11,437	11,792	12,253	12,709	13,082	13,437	13,819	14,248
Elementary Percent Change		3.64%	1.80%	1.99%	2.81%	2.92%	3.11%	3.91%	3.73%	2.93%	2.71%	2.84%	3.10%
Elementary Absolute Change		366	187	211	303	325	355	461	456	373	355	382	429

Yellow box = > 5% over capacity
Green box = within 5% of capacity

Ten Year Forecast by Secondary Campus



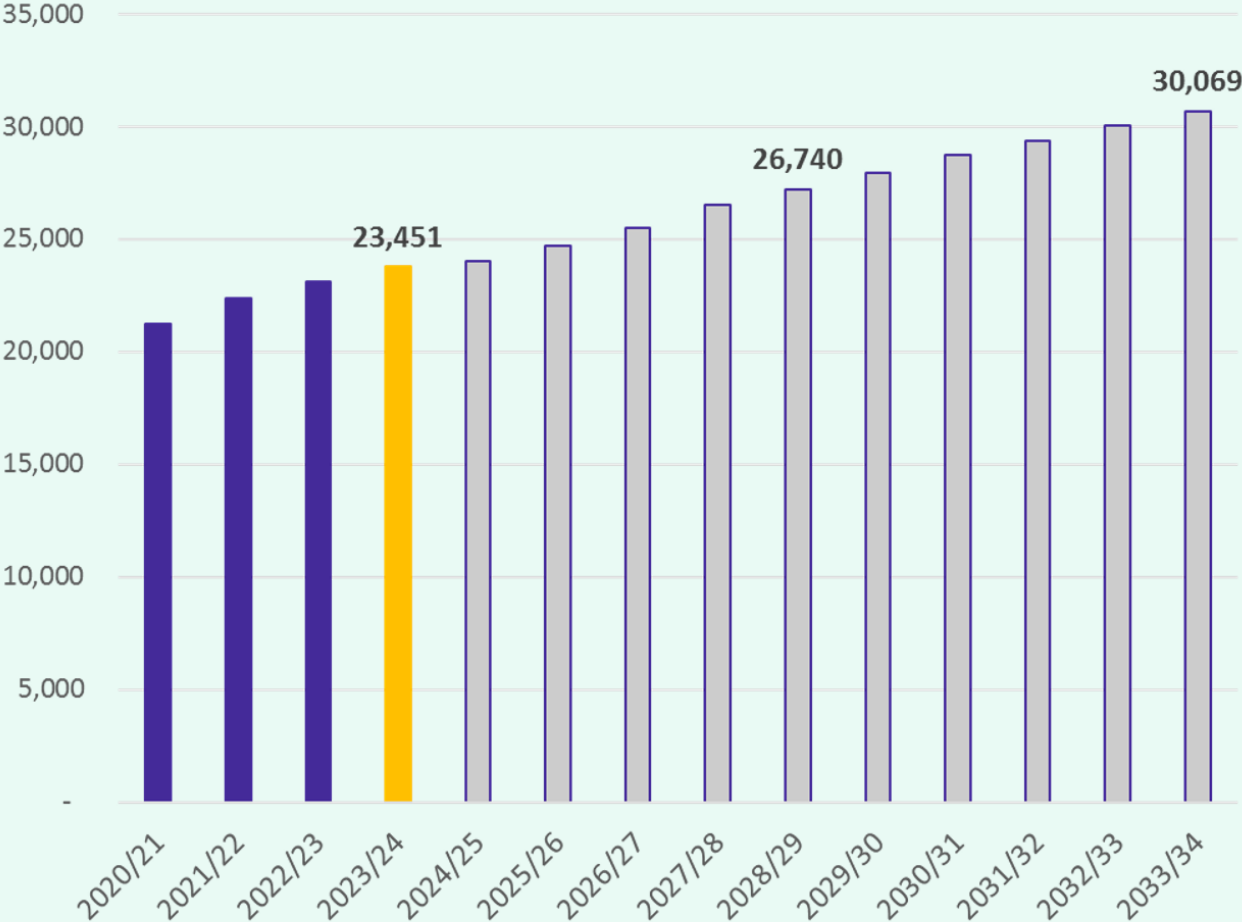
			Fall	ENROLLMENT PROJECTIONS									
Campus	Capacity	2022/23	2023/24	2024/25	2025/26	2026/27	2027/28	2028/29	2029/30	2030/31	2031/32	2032/33	2033/34
CREEKVIEW MIDDLE SCHOOL	1,078	846	887	954	947	949	929	903	858	834	837	858	872
HIGHLAND MIDDLE SCHOOL	1,050	731	704	757	797	841	862	876	828	775	739	761	772
PRAIRIE VISTA MIDDLE SCHOOL	1,002	920	892	946	1,048	1,120	1,146	1,145	1,245	1,311	1,385	1,422	1,449
WAYSIDE MIDDLE SCHOOL	1,002	1,079	1,095	1,109	1,161	1,257	1,299	1,366	1,436	1,585	1,727	1,841	1,966
WILLKIE MIDDLE SCHOOL	1,002	722	757	784	834	858	902	869	796	739	739	777	807
MARINE CREEK MIDDLE SCHOOL	1,200	982	922	979	1,001	1,039	1,037	1,033	1,038	1,041	1,061	1,077	1,092
MIDDLE SCHOOL TOTALS	6,334	5,280	5,257	5,529	5,788	6,064	6,175	6,192	6,201	6,285	6,488	6,736	6,958
Middle School Percent Change		-0.43%	-0.44%	5.17%	4.68%	4.77%	1.83%	0.28%	0.15%	1.35%	3.23%	3.82%	3.30%
Middle School Absolute Change		-23	-23	272	259	276	111	17	9	84	203	248	222
BOSWELL HIGH SCHOOL	2,500	2,551	2,708	2,584	2,569	2,520	2,507	2,463	2,505	2,498	2,468	2,508	2,541
EAGLE MOUNTAIN HIGH SCHOOL	2,500			723	943	997	1,049	1,102	1,201	1,271	1,330	1,414	1,453
SAGINAW HIGH SCHOOL	2,500	2,182	2,213	2,098	1,994	1,882	1,939	2,012	2,077	2,163	2,170	2,142	2,166
CHISHOLM TRAIL HIGH SCHOOL	2,500	2,499	2,517	2,209	2,229	2,272	2,419	2,560	2,623	2,685	2,684	2,598	2,545
WATSON HIGH SCHOOL		97	93	93	93	93	93	93	93	93	93	93	93
HIGH SCHOOL TOTALS		7,329	7,531	7,707	7,828	7,764	8,007	8,230	8,499	8,710	8,745	8,755	8,798
High School Percent Change		4.79%	2.76%	2.34%	1.57%	-0.82%	3.13%	2.79%	3.27%	2.48%	0.40%	0.11%	0.49%
High School Absolute Change		335	202	176	121	-64	243	223	269	211	35	10	43
TARRANT COUNTY JJAEP		0	2	2	2	2	2	2	2	2	2	2	2
ALTERNATIVE DISCIPLINE SCHOOL		73	63	63	63	63	63	63	63	63	63	63	63
ALTERNATIVE SCHOOL TOTALS		73	65	65	65	65	65	65	65	65	65	65	65
DISTRICT TOTALS		23,093	23,451	24,110	24,793	25,330	26,039	26,740	27,474	28,142	28,735	29,375	30,069
District Percent Change		3.16%	1.55%	2.81%	2.83%	2.16%	2.80%	2.69%	2.75%	2.43%	2.11%	2.23%	2.36%
District Absolute Change		707	358	659	683	537	709	701	734	668	593	640	694

Yellow box = > 5% over capacity
Green box = within 5% of capacity



Key Takeaways

Enrollment Forecast



- 2023 annual start rate bounced back to nearly 2,000 starts
- Groundwork is currently underway on more than 2,500 lots within six subdivisions
- Multifamily construction continues with more than 900 units under construction and appx. 2,000 units in the planning stages
- Eagle Mountain-Saginaw ISD is forecasted to enroll approximately 26,700 students in 2028/29 and could reach close to 30,100 students by the 2033/34 school year



Bond Progress Updates



Eagle Mountain High School

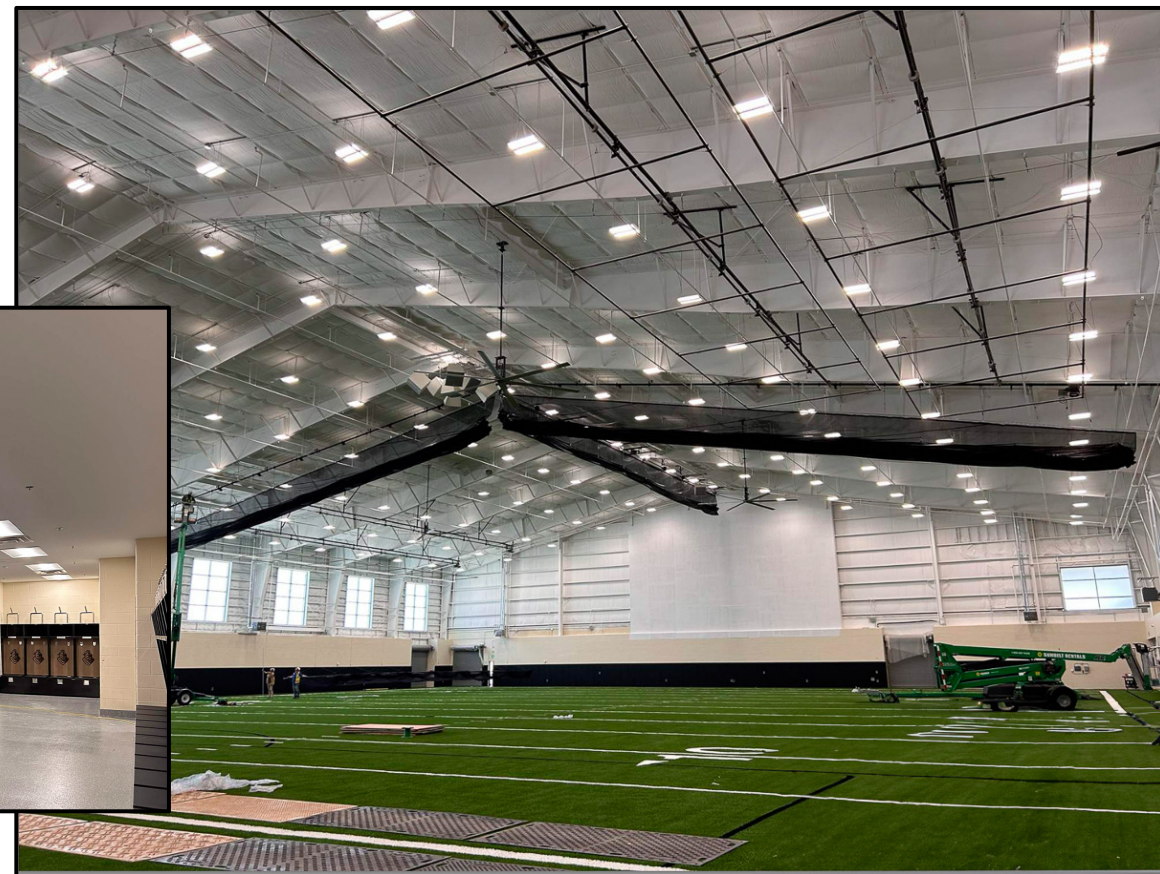
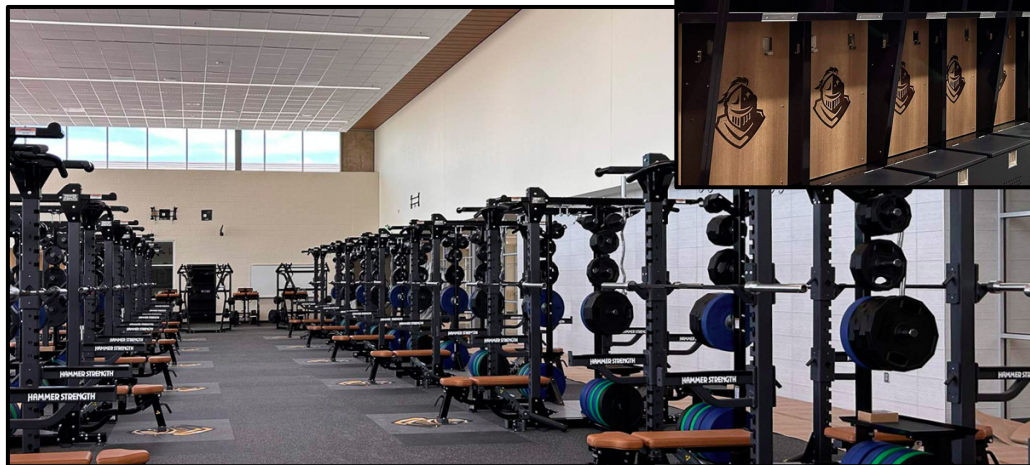
- Landscaping continues throughout the campus site.





Eagle Mountain High School

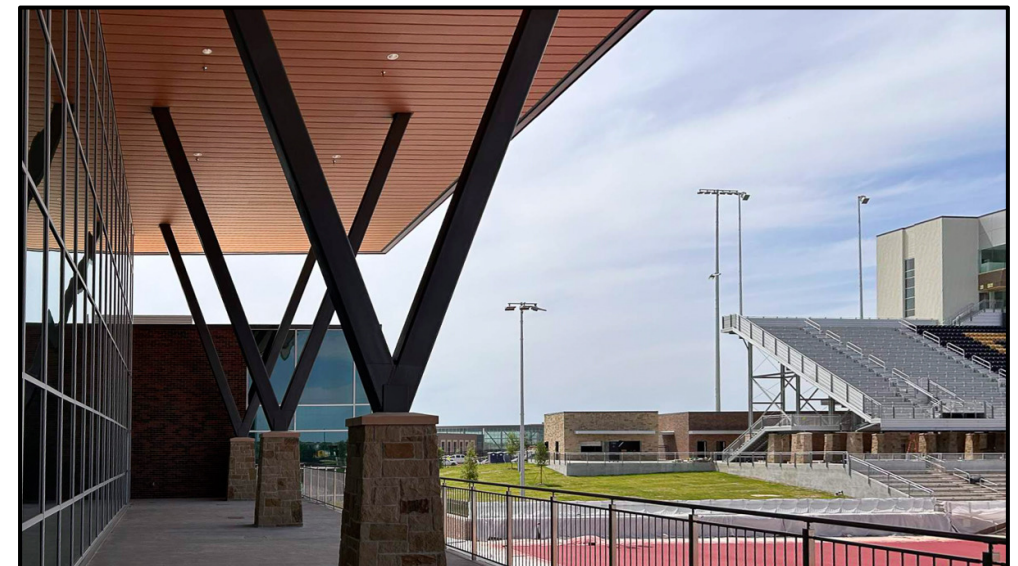
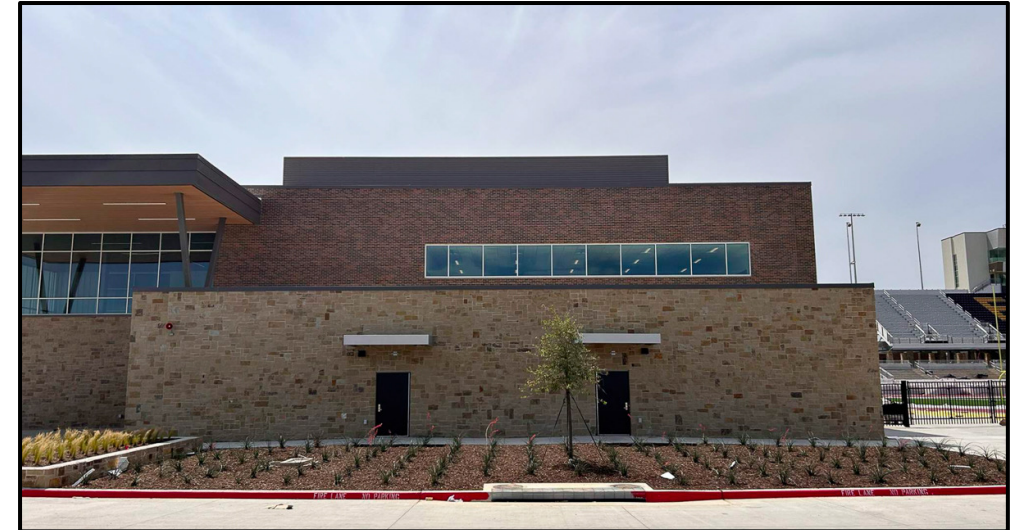
- Fieldhouse varsity locker room, fieldhouse weight room, and indoor practice facility. Facilities are ready for athletic staff to occupy.





Eagle Mountain High School

- Photos of the fieldhouse east elevation and weight room balcony.
- Stadium track striping is ongoing.





Eagle Mountain High School

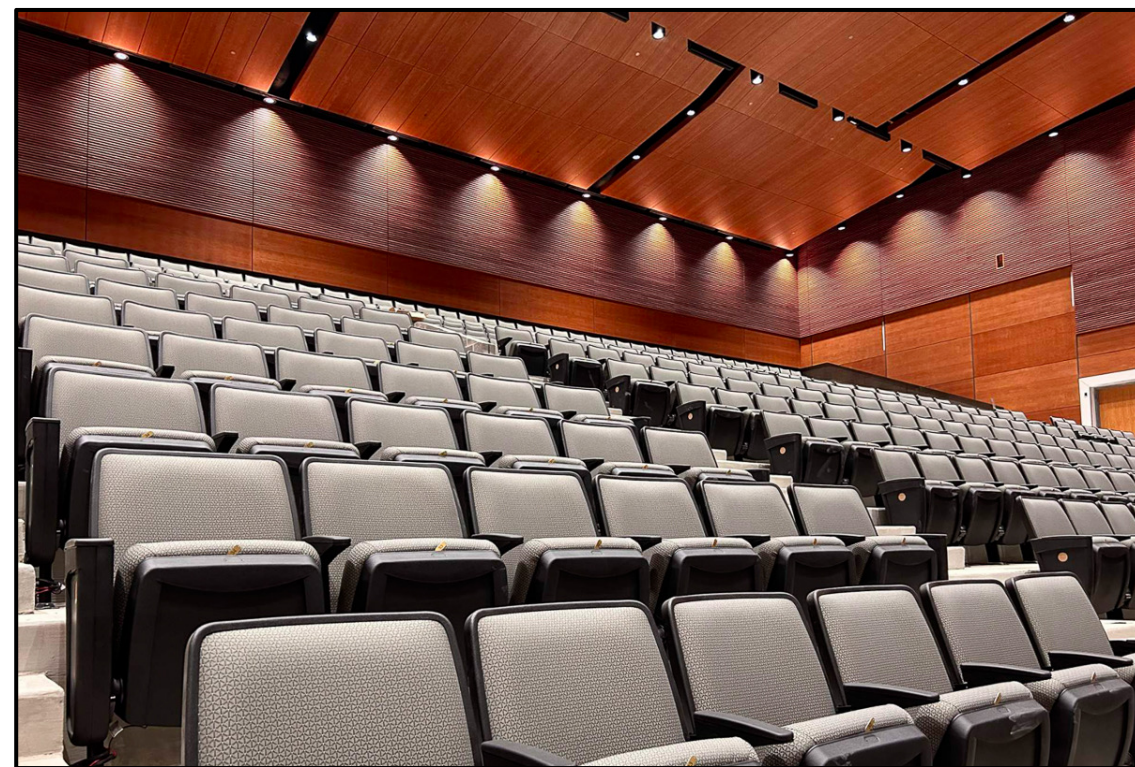
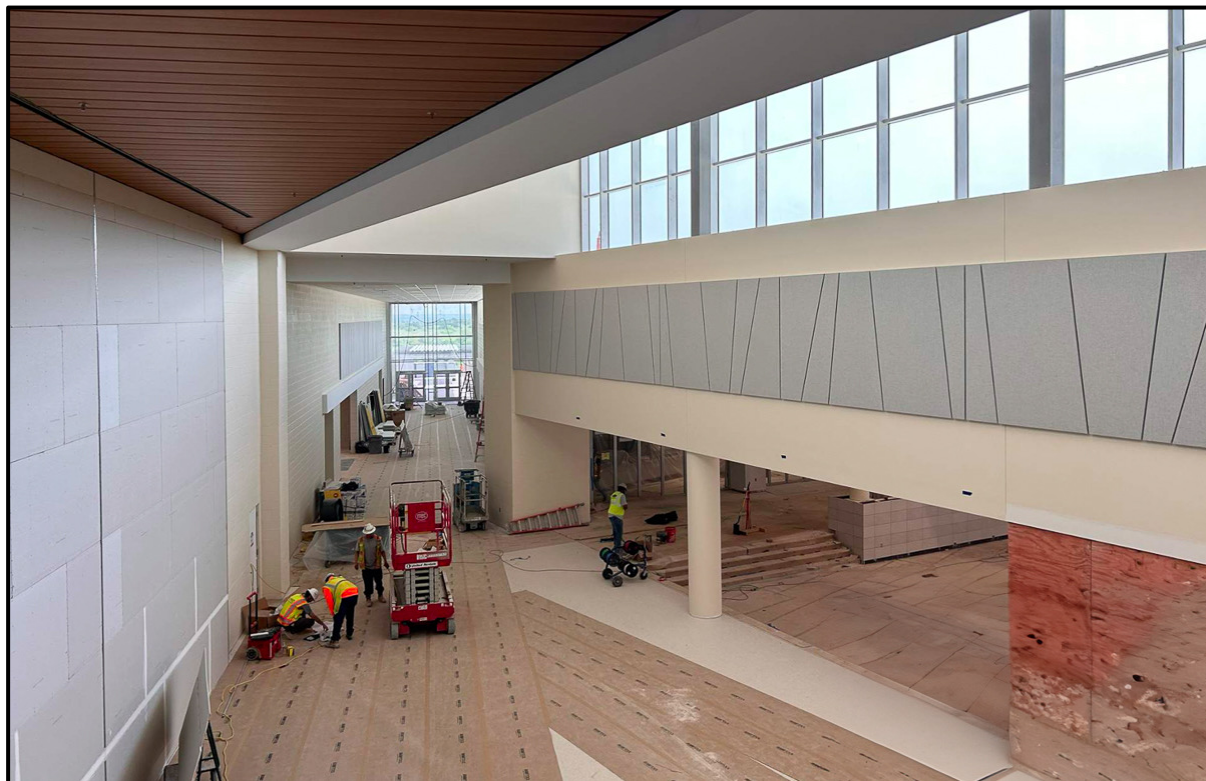
- Tennis court and auxiliary field are complete.





Eagle Mountain High School

- Fine arts corridor flooring, ceilings, and acoustic panels have been installed.
- Auditorium seating installation is ongoing.





Eagle Mountain High School

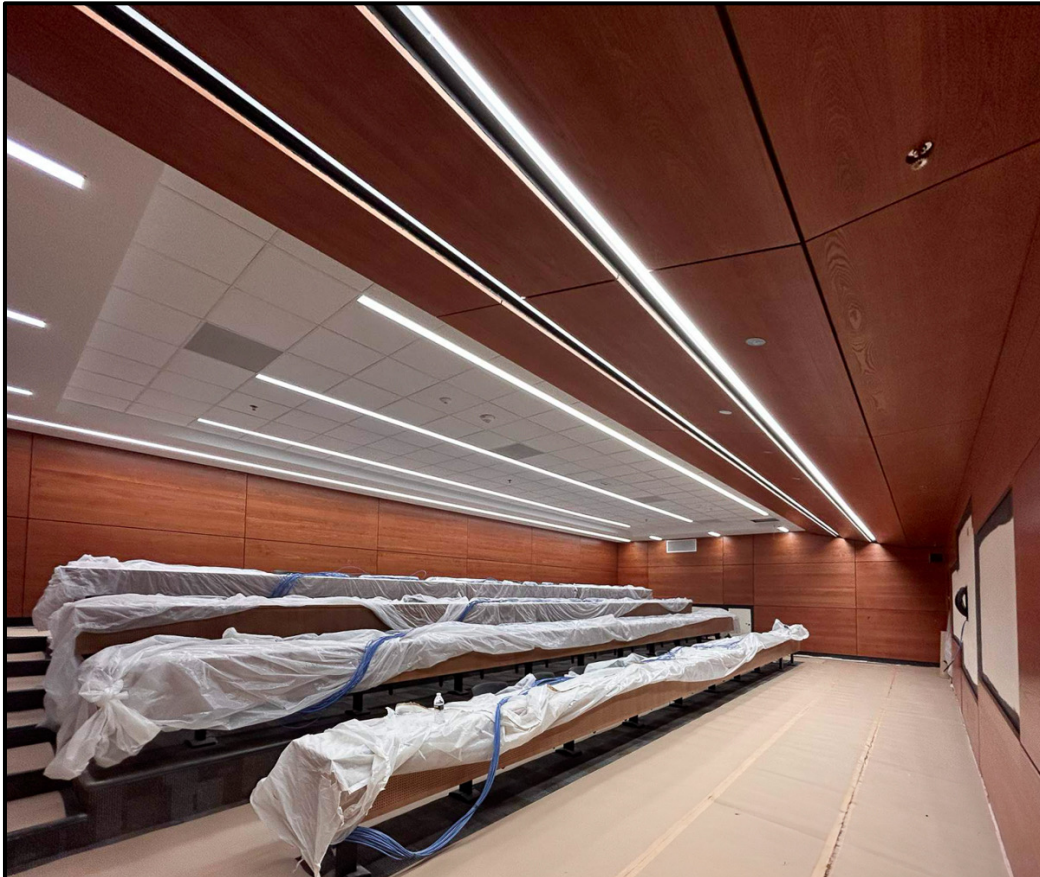
- Progress continues on the dry creek courtyard.





Eagle Mountain High School

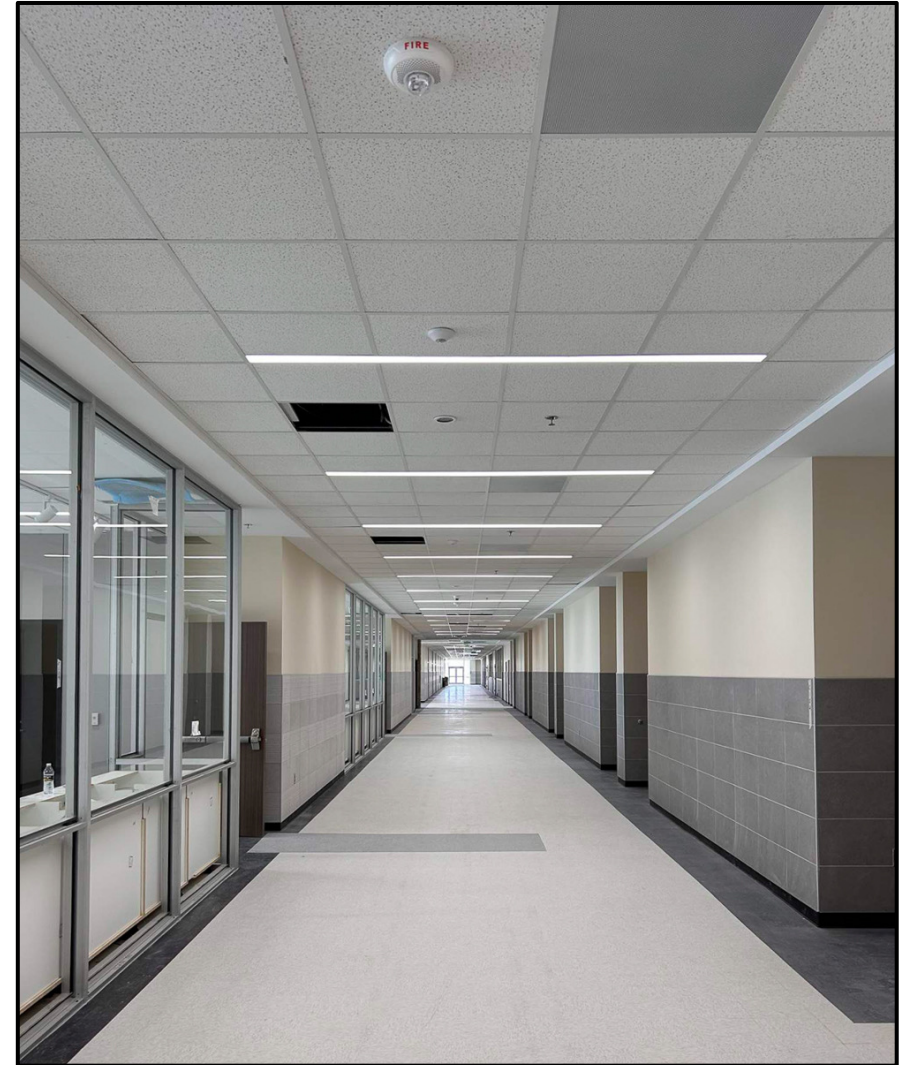
- Small lecture hall wood paneling has been installed.
- Large lecture hall wood paneling and acoustic panels installation are in progress.



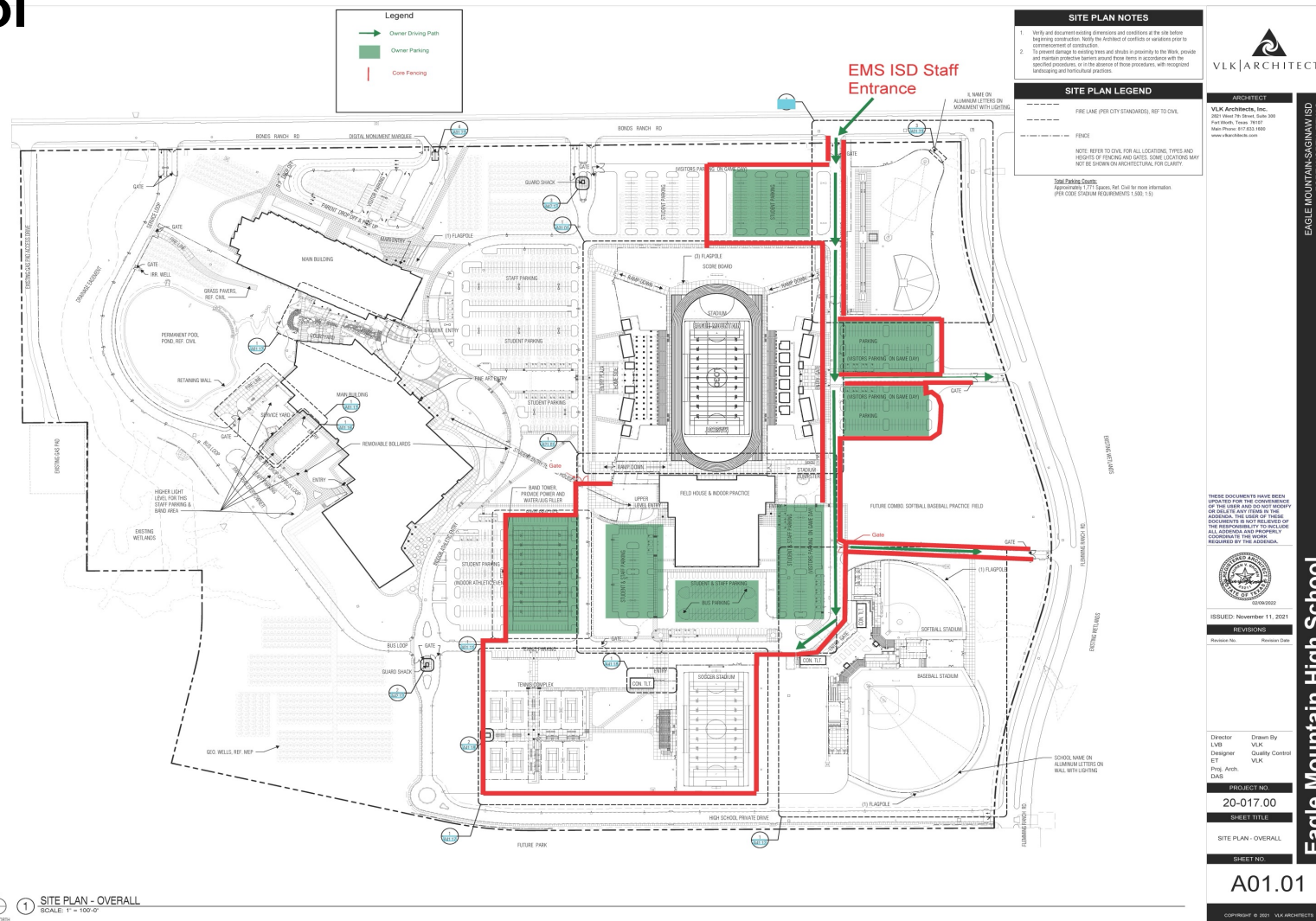


Eagle Mountain High School

- Photos of typical academic building corridors and classrooms.



- **Fenced areas (in red) are available for summer activities.**





Eagle Mountain High School



Projected Finish-Out Timeline:

- Fieldhouse staff move-in was on May 22.
- Main building FF&E delivery was on May 20.
- Administration move-in is scheduled for June 13.
- Remaining staff move-in is scheduled for July 8.

(Subject to change due to receiving proper certificate of occupancy)



Wayside Middle School Replacement Campus





Wayside Middle School Replacement Campus

Current Project Status:

- Survey of buildings 4, 5, and 6 at the former administration complex have been completed. Results to be submitted to the City prior to demolition.
- Equipment onsite to start demolition of football field and tennis courts.
- Construction fencing has been completed and silt fence is ongoing.
- Scheduling work for revisions of existing Wayside front drive and temporary football field at Bryson ES.



Wayside Middle School Replacement Campus

SAFETY AND SECURITY

- ACTION PLANS TO SECURE SITE DURING CONSTRUCTION

COMMUNICATION

- KEY FORMS OF COMMUNICATION TO RELAY INFORMATION TO KEY PARTNERS

PROJECT CONSTRUCTION PHASING

- PLAN FOR CONSTRUCTION CYCLES FOR INSTRUCTIONAL BUILDING AND AUXILIARY SUPPORT FACILITIES



***PREPARING FOR GROWTH
UPDATING STUDENT TECHNOLOGY
MAINTAINING FACILITY INVESTMENTS***



Wayside Middle School Replacement Campus

SAFETY AND SECURITY

- SECURITY OF CONSTRUCTION SITE
- PLAN FOR STUDENT WALKERS, BIKERS
- TRAFFIC PLAN
- EMS ISD POLICE/SECURITY SUPPORT
- PLAN FOR WMS ATHLETICS





Wayside Middle School Replacement Campus

COMMUNICATION

Key Partners

- NEIGHBORS, COMMUNITY, CAMPUSES, CITY OF SAGINAW, EMS ISD OPERATIONS, EMS ISD COMMUNICATIONS, EMS ISD TRANSPORTATION, EMS ISD ATHLETICS

Methods

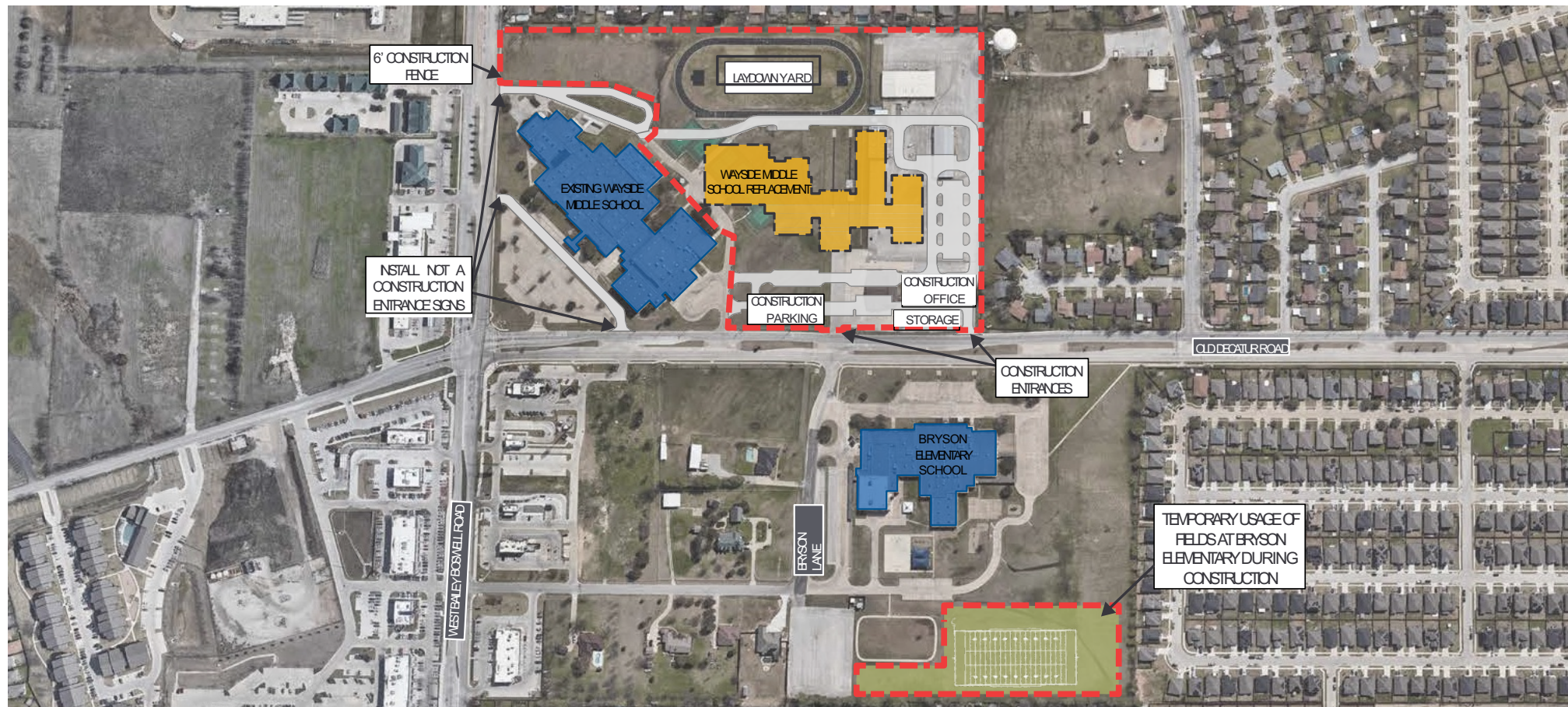
- KEY FORMS OF COMMUNICATION TO RELAY INFORMATION TO KEY PARTNERS
 - DISTRICT WEBSITE
 - DIRECT MESSAGING
 - SOCIAL MEDIA
 - FLYERS, DOOR HANGERS, PRINTED MATERIALS





Wayside Middle School Replacement Campus

PROJECT PHASE 1



JUN 2024: PROJECT CONSTRUCTION

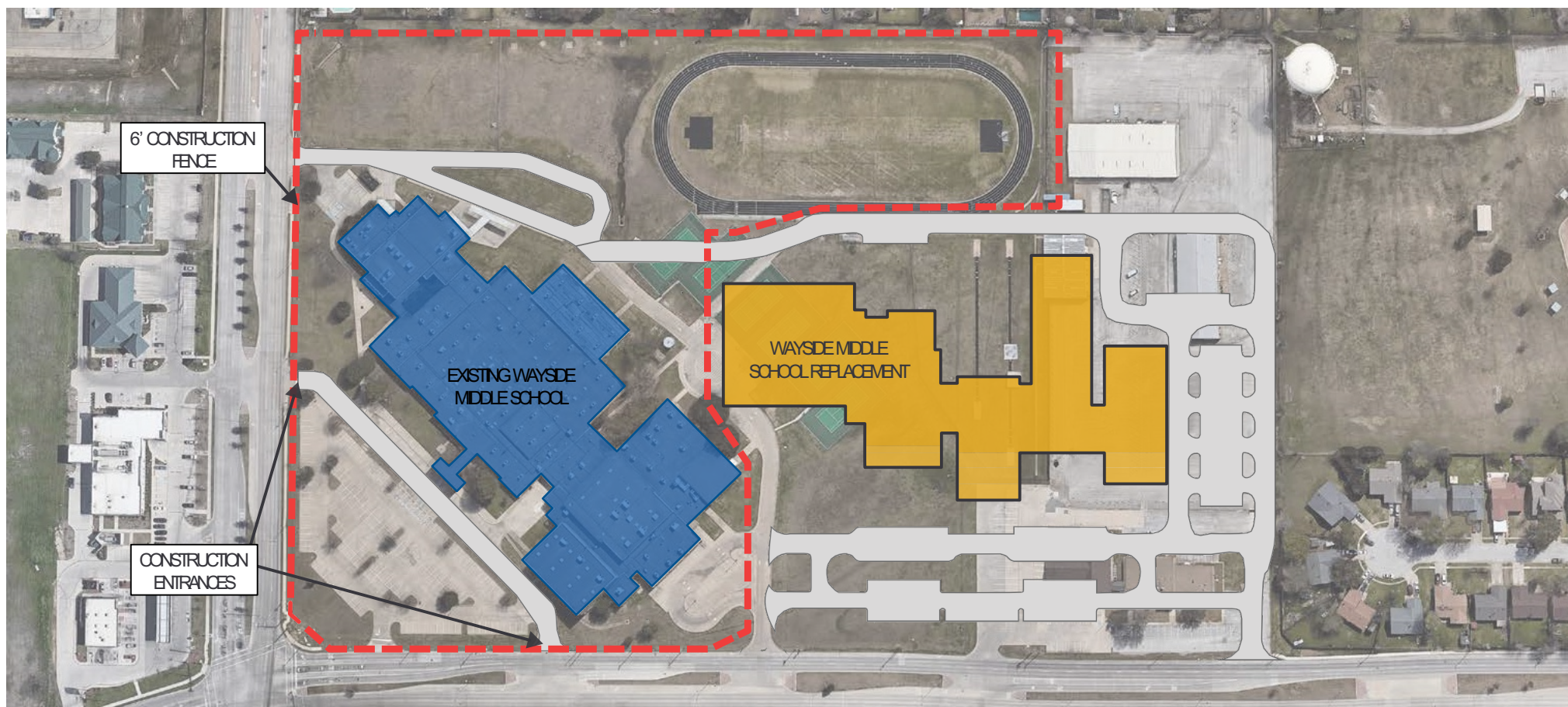
DEC 2025: SCHOOL MOVE INTO NEW BUILDING

DEC 2026: PROJECT COMPLETION



Wayside Middle School Replacement Campus

PROJECT PHASE 2



JUN 2024: PROJECT CONSTRUCTION

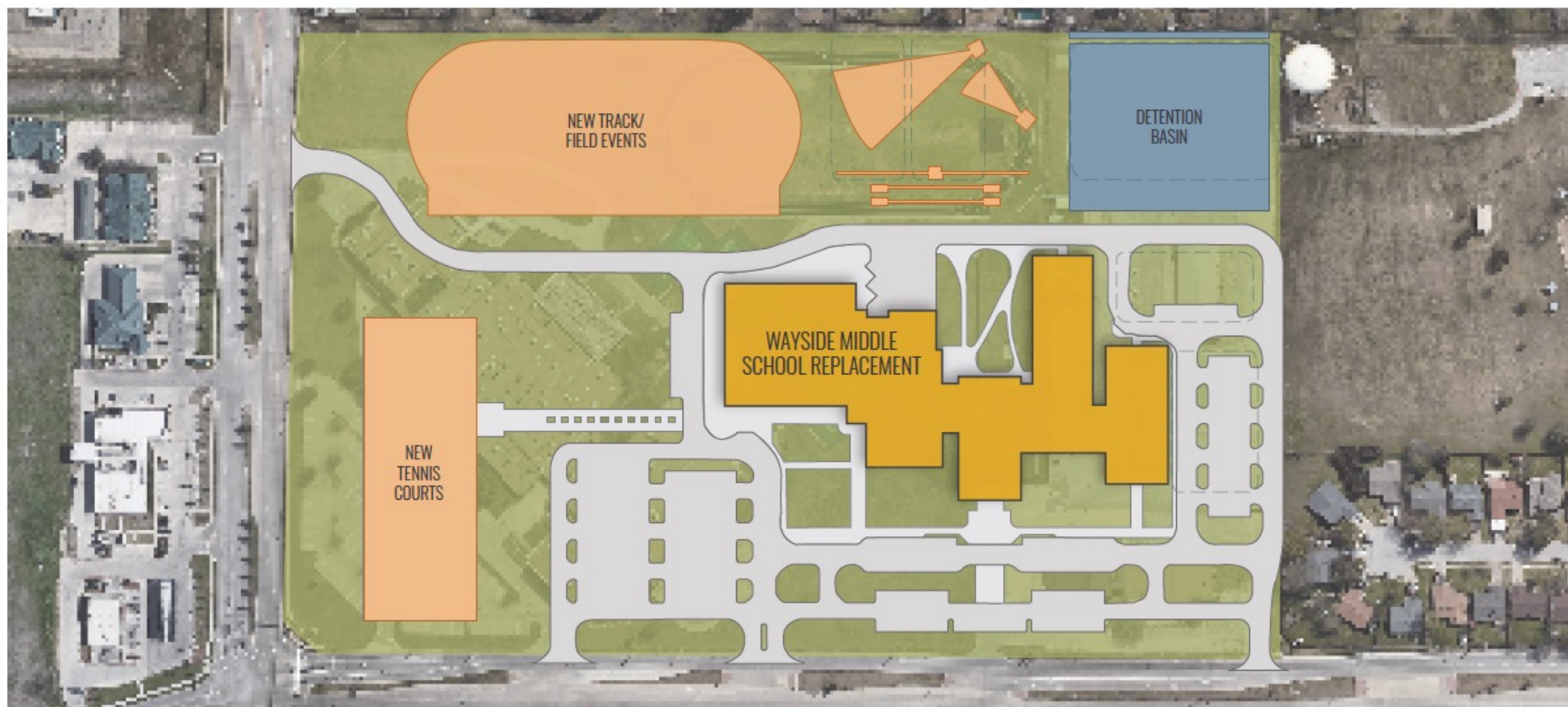
DEC 2025: SCHOOL MOVE INTO NEW BUILDING

DEC 2026: PROJECT COMPLETION



Wayside Middle School Replacement Campus

COMPLETION



JUN 2024: PROJECT CONSTRUCTION

DEC 2025: SCHOOL MOVE INTO NEW BUILDING

DEC 2026: PROJECT COMPLETION



Summer 2024 Projects



ATTENTION

Want to watch a helicopter lift air conditioning units in place at Highland Middle School?

Safely watch from **High Country Elementary School!**

Thursday, June 13, 2024
8:00 a.m.

See you there!



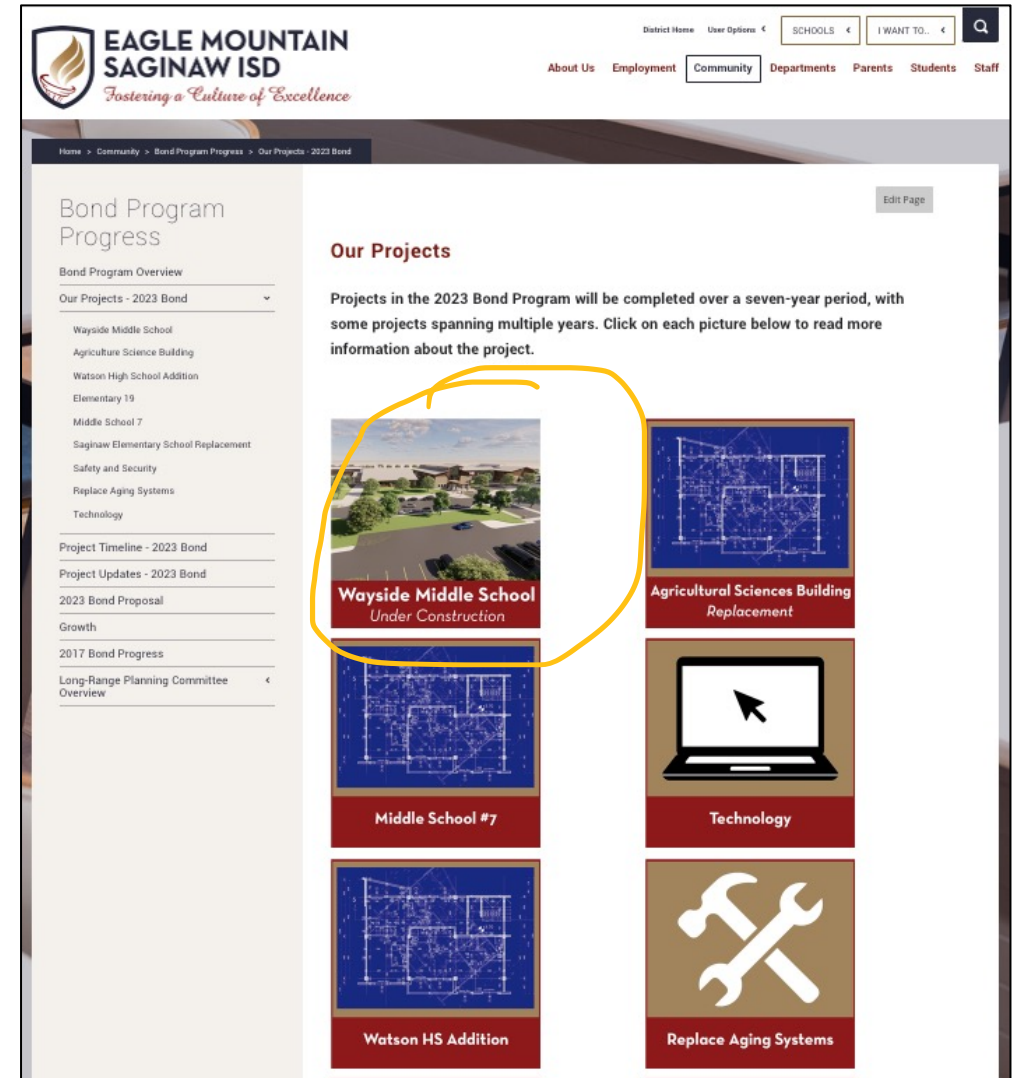
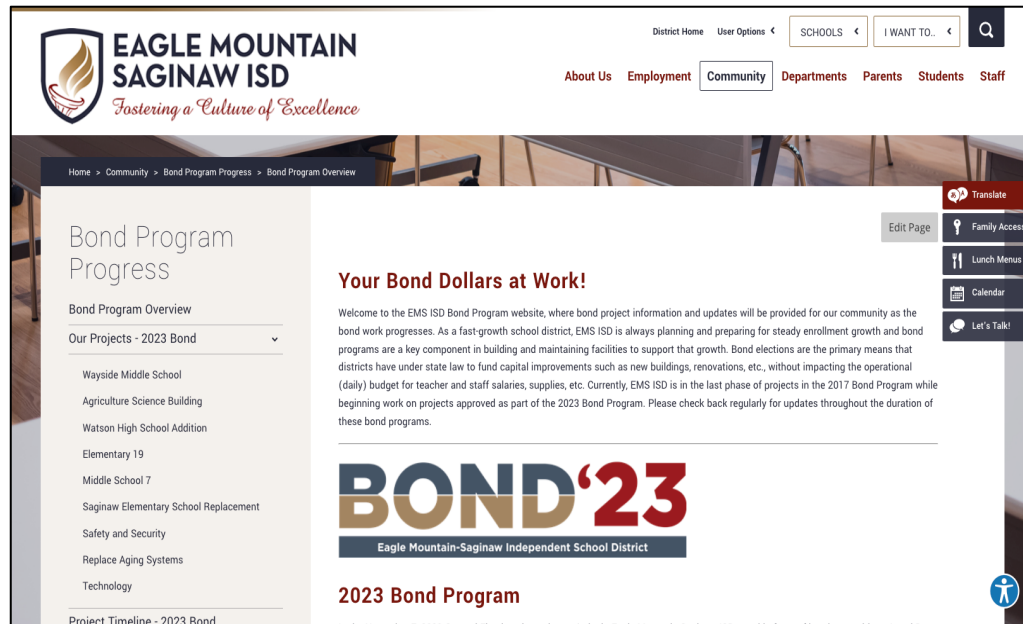
- Highland MS and Saginaw ES Roof and RTU replacement underway. *HMS watch party scheduled for June 13!*
- Creekview MS RTU replacement underway.
- Exterior improvements at 14 campuses began on May 1. (CSES, EMES, GES, GFES, HCES, LPES, NBES, PES, RPES, WCES, EWMS, PVMS, SHS, CRES)
- Secondary secured vestibule buzz-in system in process.
- Playground resurfacing at seven campuses underway.
- Carpet replacement scheduled at Ed Willkie MS on June 1 and Lake Pointe ES on June 17.
- Marine Creek Parkway traffic signal scheduled for completion December 2024.
- Addition of Eagle Mountain-Saginaw ISD building letters districtwide will be completed in summer 2024.
- Gililand Elementary School – Courtyard renovation will be completed summer 2024.
- Natatorium – Design in progress with the YMCA.



Keeping the Community Informed



- Bond Progress and project signage
- Staff and parent email updates
- Bond Progress website
<https://www.emsisd.com/BondProgress23>
- Bond Progress article – *EMS Proud* spring issue 2024
- Principal newsletters
- Social Media
- You!



Upcoming Dates & Reminders



- Quarterly meeting dates:
 - Thursday, September 5
 - Thursday, December 5
- Questions, requested information, recommendations for invitations to interested community members:
 - Email Megan at moverman@ems-isd.net

Thank You...